



Committed to being a  
world class **supplier** and **service provider**  
recognised for **integrity** and **innovation**



# Transmin Standard Reclaim Hopper

Incorporating Transmin Low Profile Feeder Technology - LPF™

August 2016 – Rev O

## Transmin Standard Reclaim Hopper

Multiple uses for ship or train loading applications, yard clean up and stockpile reclaim or management



# Transmin Standard Reclaim Hopper

Fixed position or skid mounted for ease of relocation

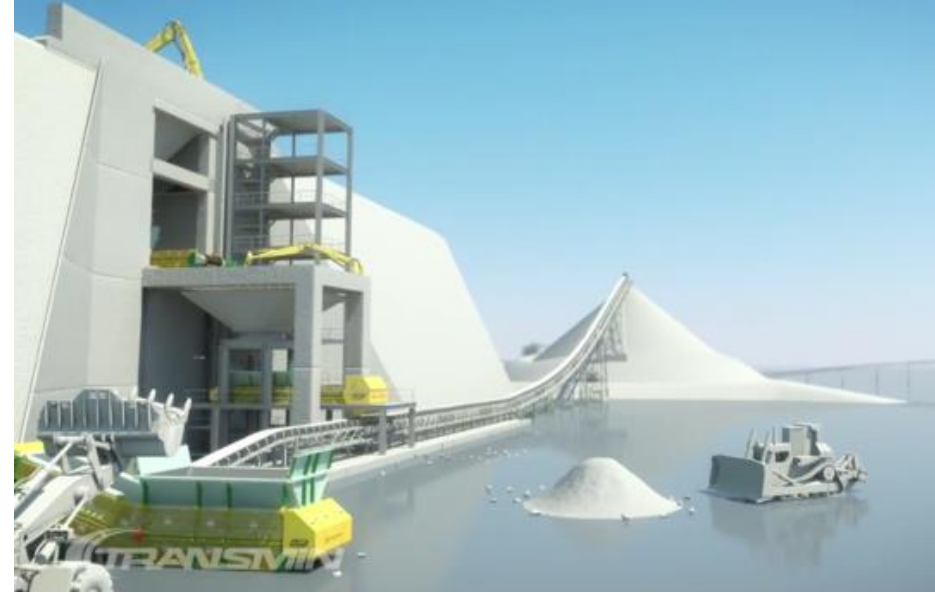


Hopper Opening of 6m Suits Most Front End Loaders

# Transmin Standard Reclaim Hopper

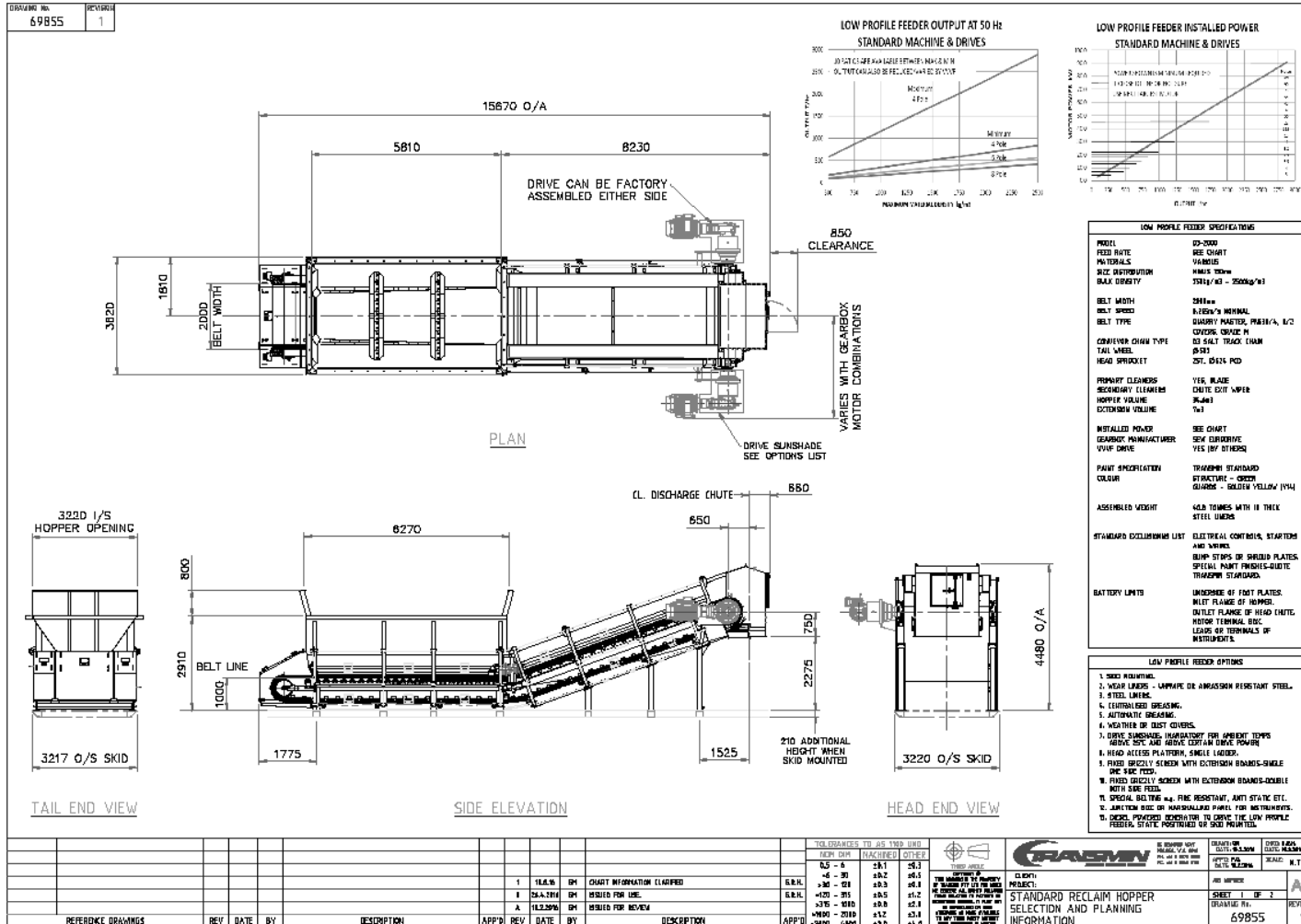
## Features and Benefits

- ▶ Cost effective solution to reclaim applications
- ▶ Discharge height – 2.3m above ground
- ▶ Proven technology in the field
- ▶ Fixed position or skid mounted
- ▶ 35m<sup>3</sup> hopper as standard
- ▶ Up to 1,500 M<sup>3</sup>/hr capacities of various materials
- ▶ 2m wide belt with Grade M covers, D3 Track Chain
- ▶ Bisalloy 400 liners to wearing surfaces of hopper, skirts and head enclosure
- ▶ SEW Eurodrive mechanical drive units



# Transmin Standard Reclaim Hopper

Planning Information – Full Size Drawing Available on Request





## Transmin HEAD OFFICE Western Australia Office

Local Call: 1300 127 091

International Call: +61 (0)8 9270 8555

Email: [wasaless@transmin.com.au](mailto:wasaless@transmin.com.au)

Address:  
33-35 Denninup Way, Malaga  
Perth, Western Australia, 6090

## Queensland and Northern Territory Office

Local Call: 1300 800 609

International Call: +61 (0)8 9270 8555

Email: [qldsales@transmin.com.au](mailto:qldsales@transmin.com.au)

Address:  
76 Dulacca Street, Acacia Ridge  
Brisbane, Queensland, 4110

## Transmin South Africa (Pty) Ltd

Local Call: +27 (0)11 759 4000

International Call: +27 (0)11 759 4000

Email: [sales@transmin.co.za](mailto:sales@transmin.co.za)

Address:  
4th Floor, The Firs,  
Cnr Biermann & Cradock Avenues,  
Rosebank, Johannesburg 2116

## Transmin Brazil

(Represented in Brazil by TMSA -  
Tecnologia em Movimentacao S/A)

International Call: +55 (31) 3479 4000

Email: [wasaless@transmin.com.au](mailto:wasaless@transmin.com.au)

Address:  
Rua Catete 999 - 1º Andar, Alto Barroca,  
CEP 30.431-016, Belo Horizonte,  
Minas Gerais, Brasil

## Transmin South America

(Represented in Chile by PH Ingeniería)

International Call: +56 (2) 2 234 5623

Email: [wasaless@transmin.com.au](mailto:wasaless@transmin.com.au)

Address:  
General Holley 2381, Oficina 1502  
Providencia, Santiago, Chile